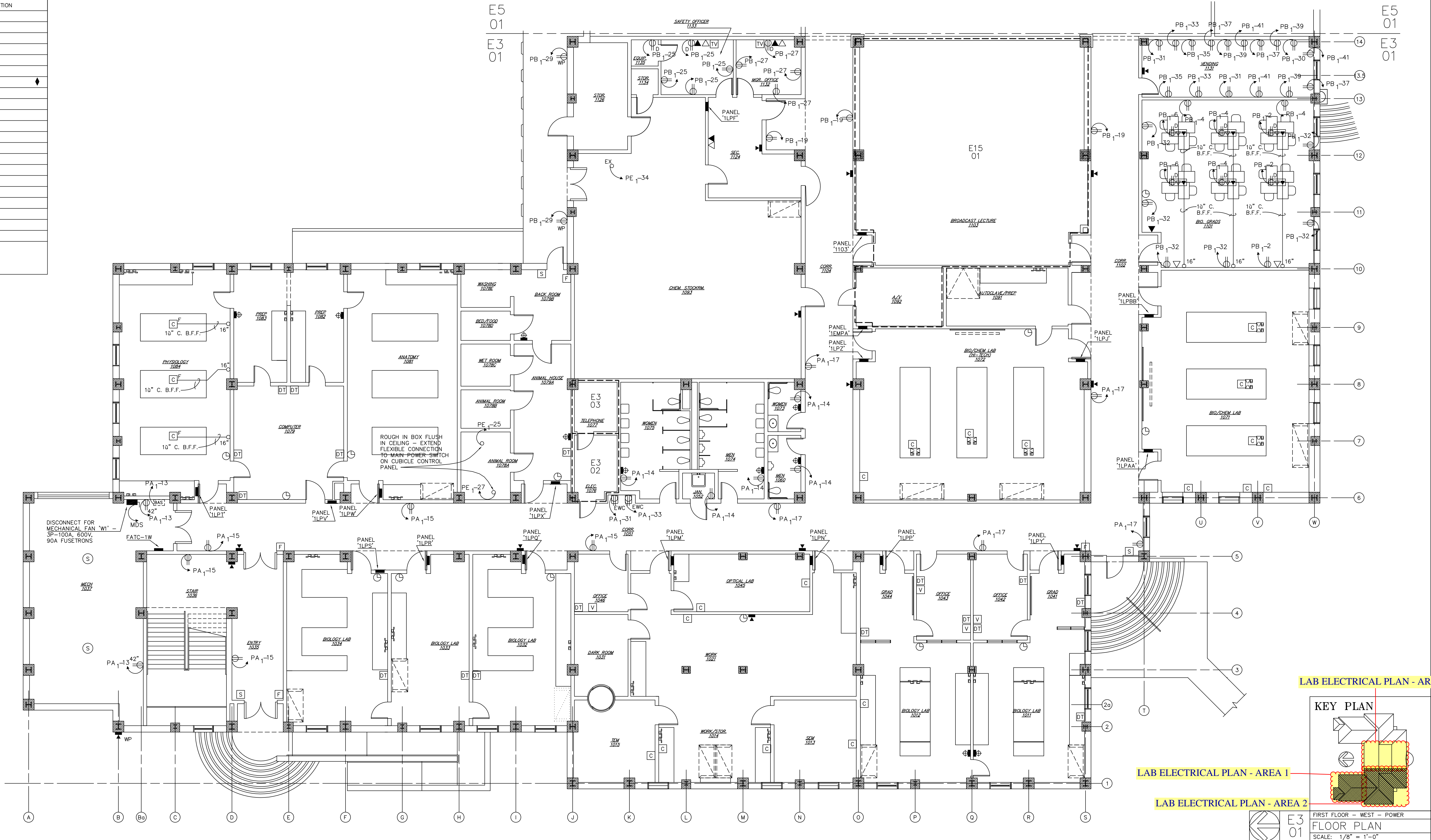
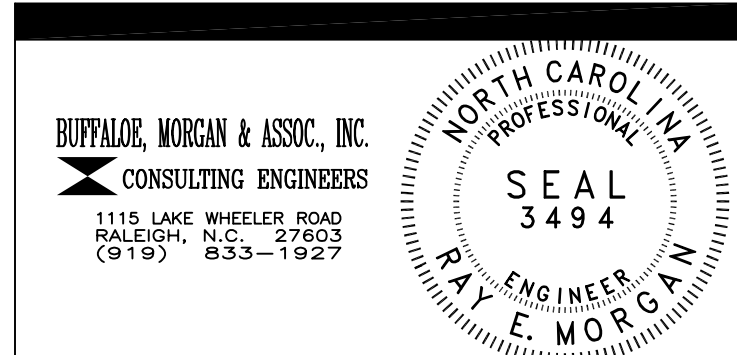


3 PHASE 4 WIRE 600 AMP BUSSING WITH 600 AMP MAIN BREAKER				PANEL PDA				120/208 VOLTS SURFACE MOUNT 25 K AIC MIN. INTEGRATED INTERRUPTING CAPACITY				3 PHASE 4 WIRE 225 AMP BUSSING WITH 150 AMP MAIN BREAKER				PANEL PE1				120/208 VOLTS SURFACE MOUNT 10 K AIC MIN. INTEGRATED INTERRUPTING CAPACITY			
NEUTRAL/GROUND BAR				NEUTRAL/GROUND BAR				NEUTRAL/GROUND BAR				NEUTRAL/GROUND BAR				NEUTRAL/GROUND BAR				NEUTRAL/GROUND BAR			
HT.	DESIGNATION	NO.		HT.	DESIGNATION	NO.		HT.	DESIGNATION	NO.		HT.	DESIGNATION	NO.		HT.	DESIGNATION	NO.		HT.	DESIGNATION	NO.	
4.5"	PANEL '1LP1'	1		4.5"	PANEL '1LPV'	2		4.5"	PANEL '1EMPA'	1		4.5"	PANEL '2EMPA'	2		4.5"	PANEL '1EMPA'	1		4.5"	PANEL '2EMPA'	2	
4.5"	3P-100A			4.5"	3P-100A			4.5"	3P-125A			4.5"	3P-150A			4.5"	3P-125A			4.5"	3P-150A		
4.5"	4#3, 1#REG, 10" C.			4.5"	4#3, 1#REG, 10" C.			4.5"	4#1, 1#REG, 2" C.			4.5"	4#1/0, 1#REG, 2" C.			4.5"	4#1, 1#REG, 2" C.			4.5"	4#1/0, 1#REG, 2" C.		
4.5"	PANEL '1LPW'	3		4.5"	PANEL '1LPS'	4		4.5"	SPACE	5		4.5"	SPACE	6		4.5"	SPACE	7		4.5"	SPACE	8	
4.5"	3P-100A			4.5"	3P-100A			4.5"	SPACE	9		4.5"	SPACE	10		4.5"	SPACE	11		4.5"	SPACE	12	
4.5"	4#3, 1#REG, 10" C.			4.5"	4#3, 1#REG, 10" C.			4.5"	SPACE	13		4.5"	SPACE	14		4.5"	SPACE	15		4.5"	SPACE	16	
4.5"	PANEL '1LPR'	5		4.5"	PANEL '1LPO'	6		4.5"	SPACE	17		4.5"	SPACE	18		4.5"	SPACE	19		4.5"	SPACE	20	
4.5"	3P-100A			4.5"	3P-100A			4.5"	SPACE	21		4.5"	SPACE	22		4.5"	SPACE	23		4.5"	SPACE	24	
4.5"	4#3, 1#REG, 10" C.			4.5"	4#3, 1#REG, 10" C.			4.5"	SPACE	25		4.5"	SPACE	26		4.5"	SPACE	27		4.5"	SPACE	28	
4.5"	PANEL '1LPM'	7		4.5"	PANEL '1LPX'	8		4.5"	SPACE	29		4.5"	SPACE	30		4.5"	SPACE	31		4.5"	SPACE	32	
4.5"	3P-125A			4.5"	3P-100A			4.5"	SPACE	33		4.5"	SPACE	34		4.5"	SPACE	35		4.5"	SPACE	36	
4.5"	4#1, 1#REG, 2" C.			4.5"	4#3, 1#REG, 10" C.			4.5"	SPACE	37		4.5"	SPACE	38		4.5"	SPACE	39		4.5"	SPACE	40	
4.5"	PANEL 'PA1'	9		4.5"	PANEL '1LPN'	10		4.5"	SPACE	41		4.5"	SPACE	42		4.5"	SPACE	43		4.5"	SPACE	44	
4.5"	3P-225A			4.5"	3P-100A			4.5"	SPACE	45		4.5"	SPACE	46		4.5"	SPACE	47		4.5"	SPACE	48	
4.5"	4#4/0, 1#REG, 20" C.			4.5"	4#3, 1#REG, 10" C.			4.5"	SPACE	49		4.5"	SPACE	50		4.5"	SPACE	51		4.5"	SPACE	52	
4.5"	PANEL '1103'	11		4.5"	PANEL '1232'	12		4.5"	SPACE	53		4.5"	SPACE	54		4.5"	SPACE	55		4.5"	SPACE	56	
4.5"	3P-150A			4.5"	3P-100A			4.5"	SPACE	57		4.5"	SPACE	58		4.5"	SPACE	59		4.5"	SPACE	60	
4.5"	4#1/0, 1#REG, 2" C.			4.5"	4#3, 1#REG, 10" C.			4.5"	SPACE	61		4.5"	SPACE	62		4.5"	SPACE	63		4.5"	SPACE	64	
4.5"	PANEL '1173'	13		4.5"	SPACE			4.5"	SPACE	65		4.5"	SPACE	66		4.5"	SPACE	67		4.5"	SPACE	68	
4.5"	3P-150A			4.5"	SPACE			4.5"	SPACE	69		4.5"	SPACE	70		4.5"	SPACE	71		4.5"	SPACE	72	
4.5"	4#1/0, 1#REG, 2" C.			4.5"	SPACE			4.5"	SPACE	73		4.5"	SPACE	74		4.5"	SPACE	75		4.5"	SPACE	76	
4.5"	REMARKS	MAIN BREAKER		4.5"	REMARKS	MAIN BREAKER		4.5"	REMARKS	MAIN BREAKER		4.5"	REMARKS	MAIN BREAKER		4.5"	REMARKS	MAIN BREAKER		4.5"	REMARKS	MAIN BREAKER	

3 PHASE 4 WIRE 225 AMP BUSSING WITH MAIN LUIS ONLY				PANEL PA1				120/208 VOLTS SURFACE MOUNT 10 K AIC MIN. INTEGRATED INTERRUPTING CAPACITY			
NEUTRAL/GROUND BAR				NEUTRAL/GROUND BAR				NEUTRAL/GROUND BAR			
HT.	DESIGNATION	NO.		HT.	DESIGNATION	NO.		HT.	DESIGNATION	NO.	
4.5"	LIGHTS	1		4.5"	SPARE	2		4.5"	LIGHTS	1	
4.5"	SPARE	3		4.5"	SPARE	4		4.5"	SPARE	3	
4.5"	SPARE	5		4.5"	SPARE	6		4.5"	SPARE	5	
4.5"	SPARE	7		4.5"	SPARE	8		4.5"	SPARE	7	
4.5"	SPARE	9		4.5"	SPARE	10		4.5"	SPARE	9	
4.5"	SPARE	11		4.5"	SPARE	12		4.5"	SPARE	11	
4.5"	RECEPTACLES	13		4.5"	RECEPTACLES	14		4.5"	RECEPTACLES	13	
4.5"	SPARE	15		4.5"	SPARE	16		4.5"	SPARE	15	
4.5"	SPARE	17		4.5"	SPARE	18		4.5"	SPARE	17	
4.5"	SPARE	19		4.5"	SPARE	20		4.5"	SPARE	19	
4.5"	SPARE	21		4.5"	SPARE	22		4.5"	SPARE	21	
4.5"	SPARE	23		4.5"	SPARE	24		4.5"	SPARE	23	
4.5"	BACKBOARD 'TV-A'	25		4.5"	BACKBOARD 'TV-A'	26		4.5"	BACKBOARD 'TV-A'	25	
4.5"	BACKBOARD 'TP-A'	27		4.5"	BACKBOARD 'TP-A'	28		4.5"	BACKBOARD 'TP-A'	27	
4.5"	BACKBOARD 'DT-A'	29		4.5"	BACKBOARD 'DT-A'	30		4.5"	BACKBOARD 'DT-A'	29	
4.5"	EW	31		4.5"	EW	32		4.5"	EW	31	
4.5"	SPARE	33		4.5"	SPARE	34		4.5"	SPARE	33	
4.5"	SPARE	35		4.5"	SPARE	36		4.5"	SPARE	35	
4.5"	SPARE	37		4.5"	SPARE	38		4.5"	SPARE	37	
4.5"	SPARE	39		4.5"	SPARE	40		4.5"	SPARE	39	
4.5"	REMARKS	NEUTRAL/GROUND BAR		4.5"	REMARKS	NEUTRAL/GROUND BAR		4.5"	REMARKS	NEUTRAL/GROUND BAR	
4.5"	REMARKS	GFI BREAKER		4.5"	REMARKS	GFI BREAKER		4.5"	REMARKS	GFI BREAKER	



ADDITIONAL POWER LAYOUT WITHIN EACH LAB WILL BE BY EARL WALLS ASSOCIATES, LABORATORY CONSULTANTS - REFER TO PLANS PD1 THRU PD12 FOR DEVICES, DEVICE LOCATIONS, AND CIRCUITS TO INDIVIDUAL LAB PANEL (NEAR DOOR)



DRAWING REVISIONS:		
NO.	DATE:	REMARKS:

DATE: 16 MAY 1994
PROJECT#: 9305
DESIGNED BY: DDS
DRAWN BY: SMC
CHECKED BY: DDS, SAB
CHECKED BY: REM

SHEET NO.:
E3
OF 17